
NON MYDRIATIC RETINAL CAMERA

24 MPx
SENSOR



Fundus Imaging

Excellent optic, ultra-high resolution, fully auto, maximal ease of use, space saving...

The new X1/X2

The Fundus camera with a new 24-megapixel sensor produces crystal clear, detail-rich images which effectively help to diagnose and monitor posterior and anterior eye segment diseases from glaucoma to diabetic retinopathy to AMD

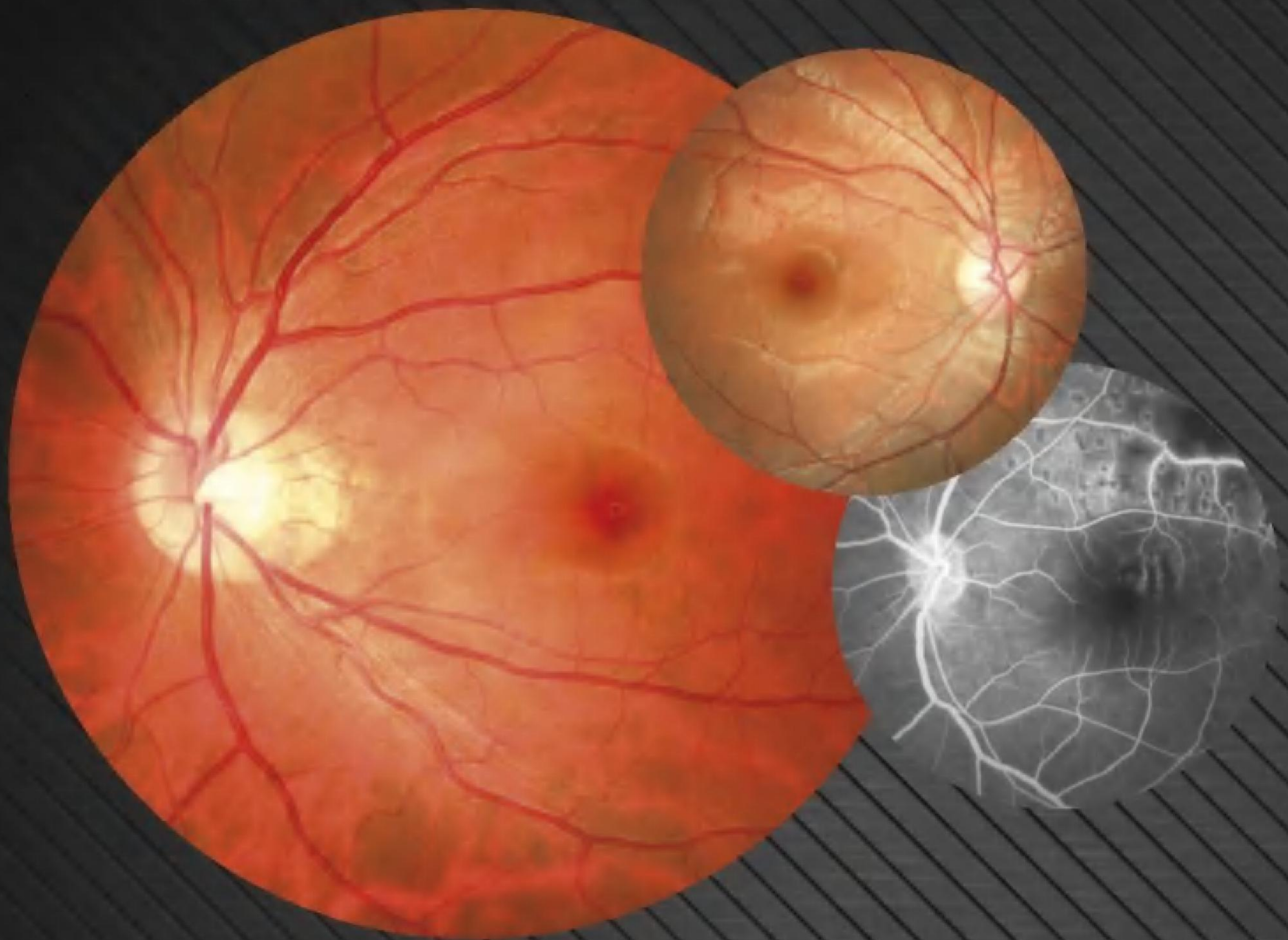
We in believe, that only the work with a pleasure brings the best results... That is easily why we use to spend a most of our time and energy to find out solutions which can make your work pleasing. In our opinion and from our experience, there are some key-points determining if your job gives you a pleasure or not... To make you work as much comfortable and effective as possible we have add most of them to our SYSEYE fundus camera...

work with
pleasure brings
the best results

- The quality first – the best possible quality of results
- Maximal comfort for patient and operator
- Ergonomics and space saving
- Simple and effective management of results



BRILLIANT PICTURE QUALITY



The TOP of the class with a 24MPx sensor

X1 - fully featured non-mydriatic and mydriatic color camera

X2 - adds fluorescein angiography (FFA) and autofluorescence (FAF)



EFFICACY AND COMFORT FOR OPERATOR



patient information input



click "one key take picture"



auto chinrest adjusting
auto alignment and focus
auto binocular photography



binocular fundus result

1 CLICK

FULLY
AUTO

- Auto Pupil searching
- Auto Chin-rest adjusting
- Auto Focusing
- Auto Shot

Dual camera system
Enhanced searching and locating of the pupil for fast and accurate autofocus

COMFORT FOR PATIENT

In addition the speed and simplicity of results in enhanced practice flow result in more accurate data, faster exams, and less need to retake examinations.

Rapid processing and automated functions lead to less time at the device for patient and staff as well and contributes to a more efficient and productive work environment.

Small Pupil Mode and Soft lighting

- Small Pupil Mode enables the fundus image can be used for pupils as small as 3.3mm .
- Soft lighting also reduces the constriction of pupil caused by illumination.



ERGONOMICS AND SPACE SAVING

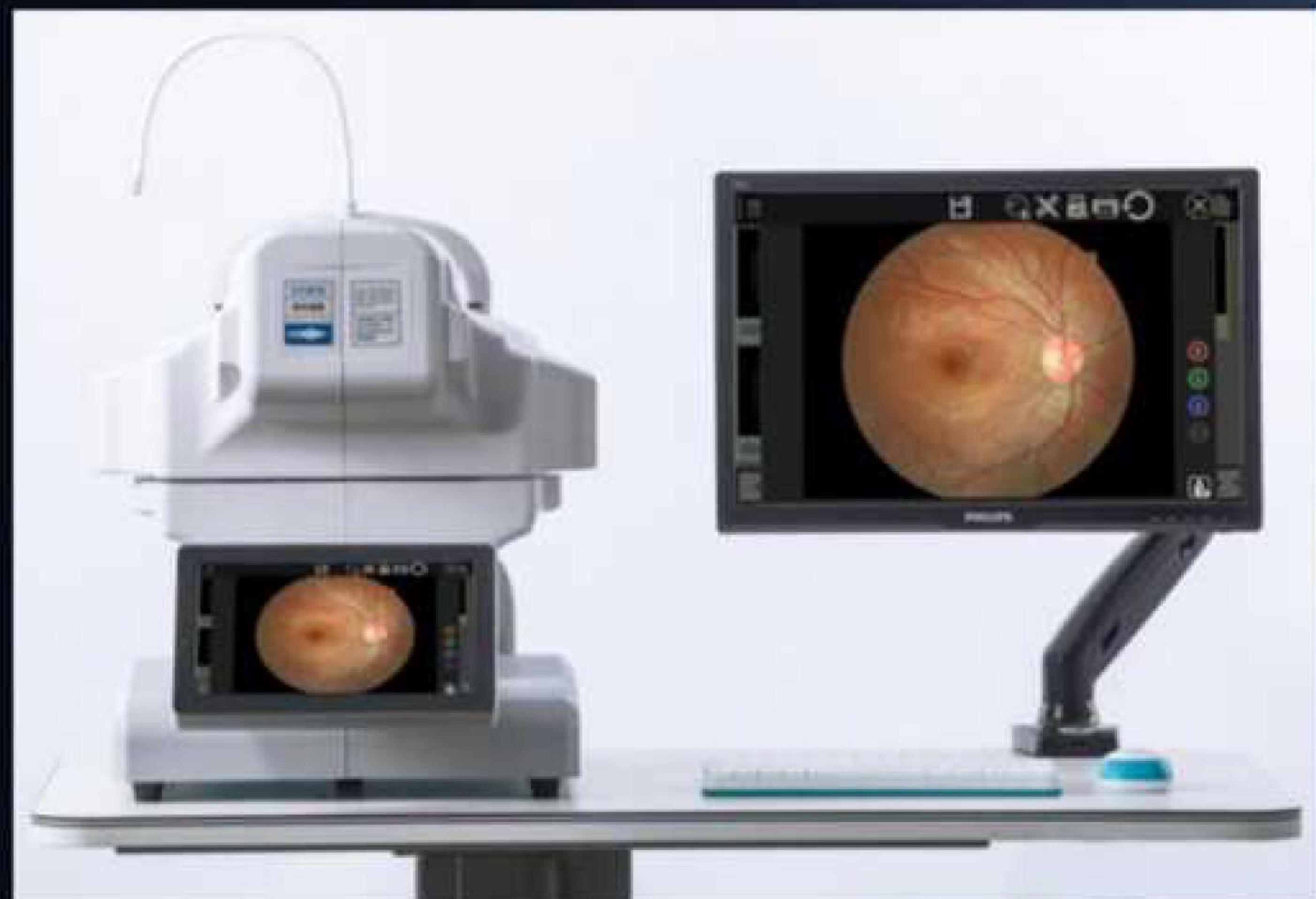
The monitor can be rotated easily to the most comfortable position.



standalone
and all-in-one
device

machine
can be used
in the corner

An additional monitor can be plugged into the device directly allowing results to be observed, evaluated and/or presented to patients in a more effective and patient friendly manner.

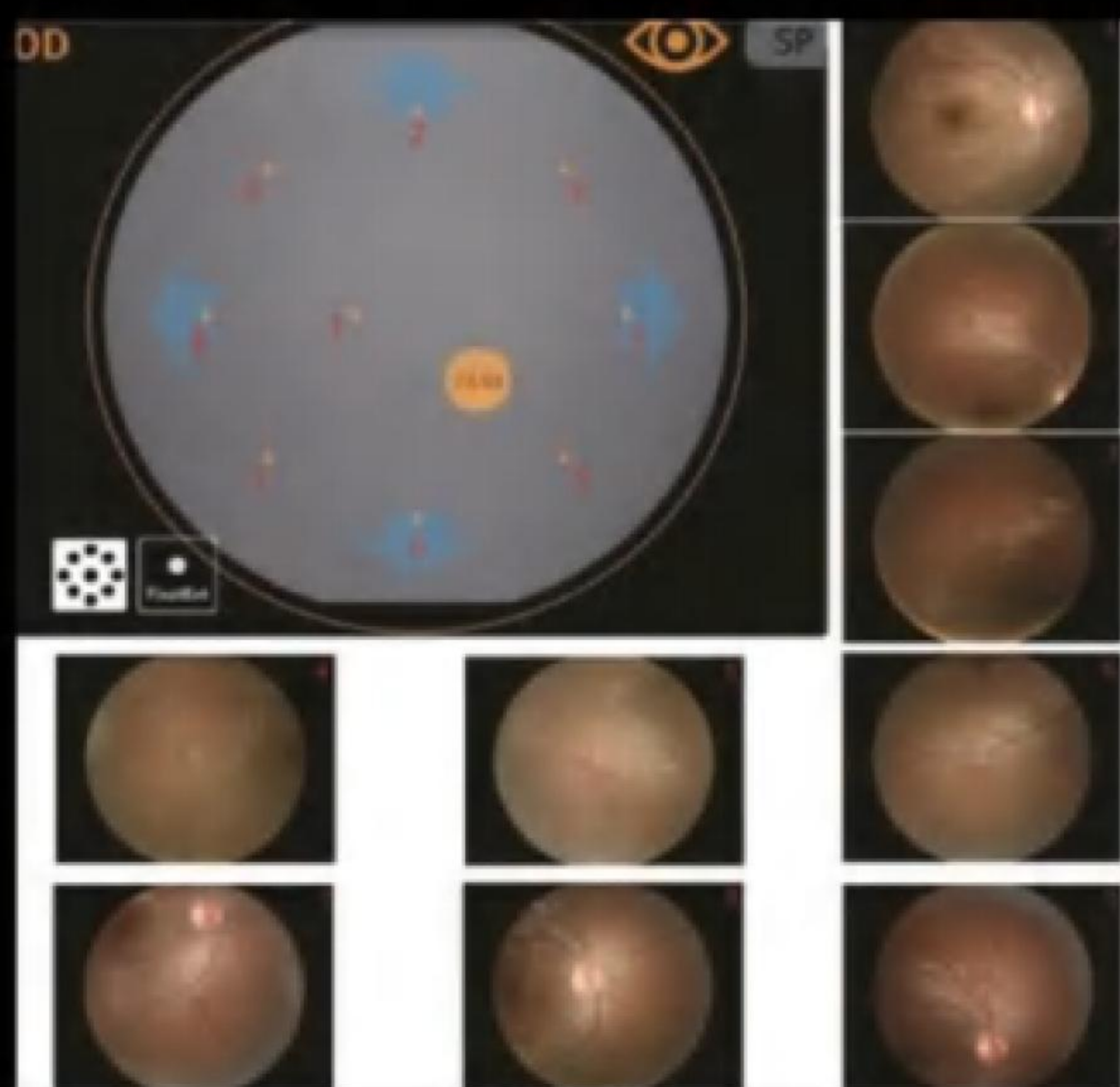


SIMPLE AND EFFECTIVE RESULT'S MANAGEMENT

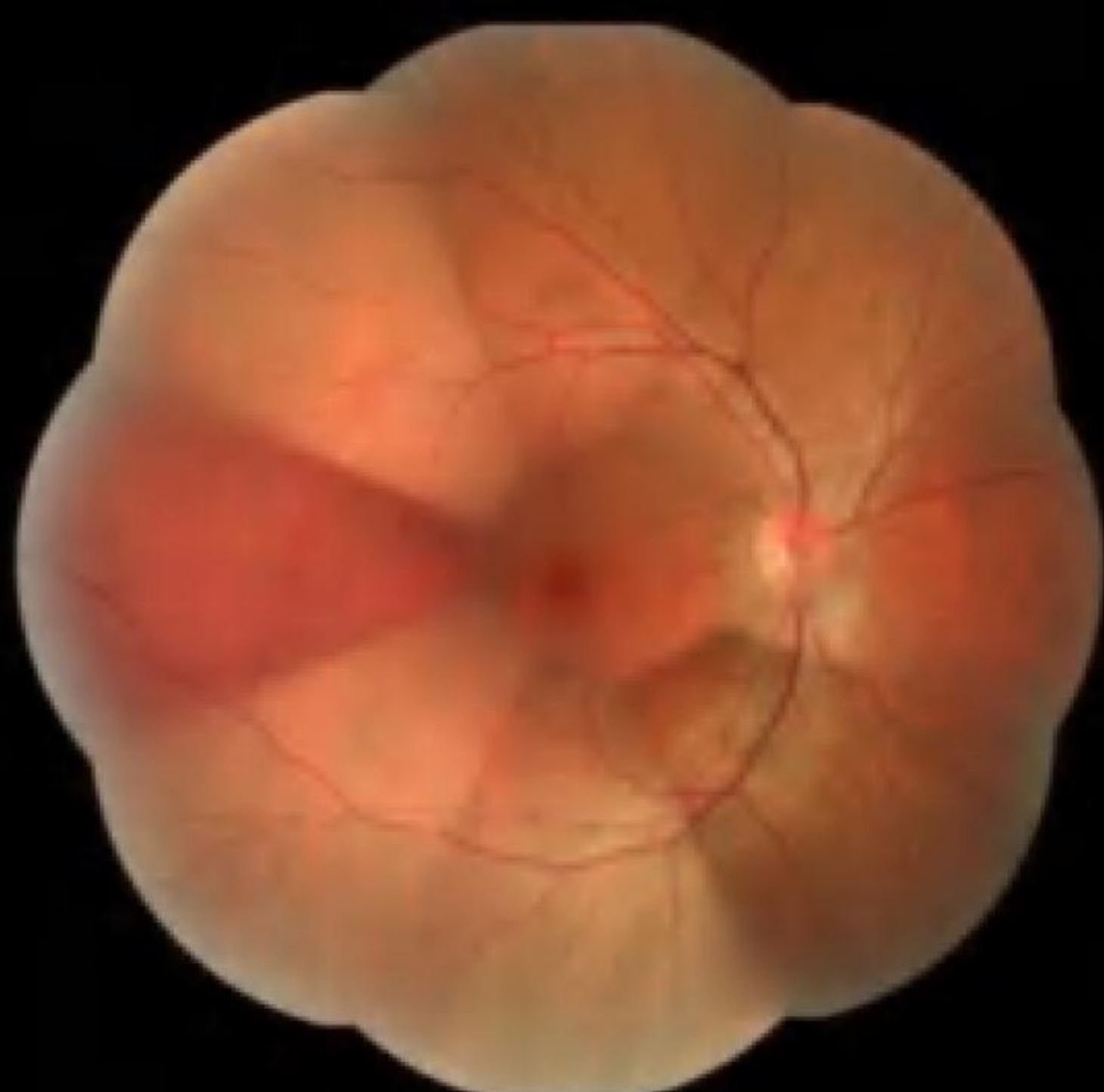
More than a pretty picture

135° wide field, mosaic with countless fixation points

The mosaic function can generate the fundus image up to 135° field of view from various images of 50° field width each. The operator can choose fixation points by his/her own choice. Just by touching the monitor screen in chosen point...



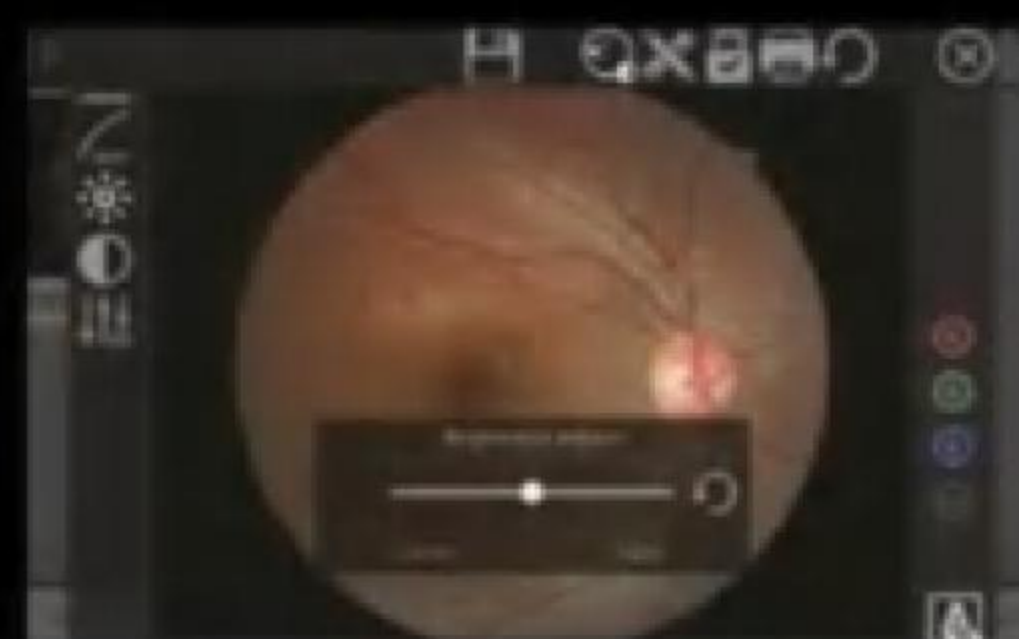
Pictures made with different fixation points



Result made by Mosaic software

Multifunctional software system

Gamma, contrast, brightness, color of image can be adjusted, according to the doctors requirement.



brightness



gamma



contrast



RGB

CONNECTIVITY

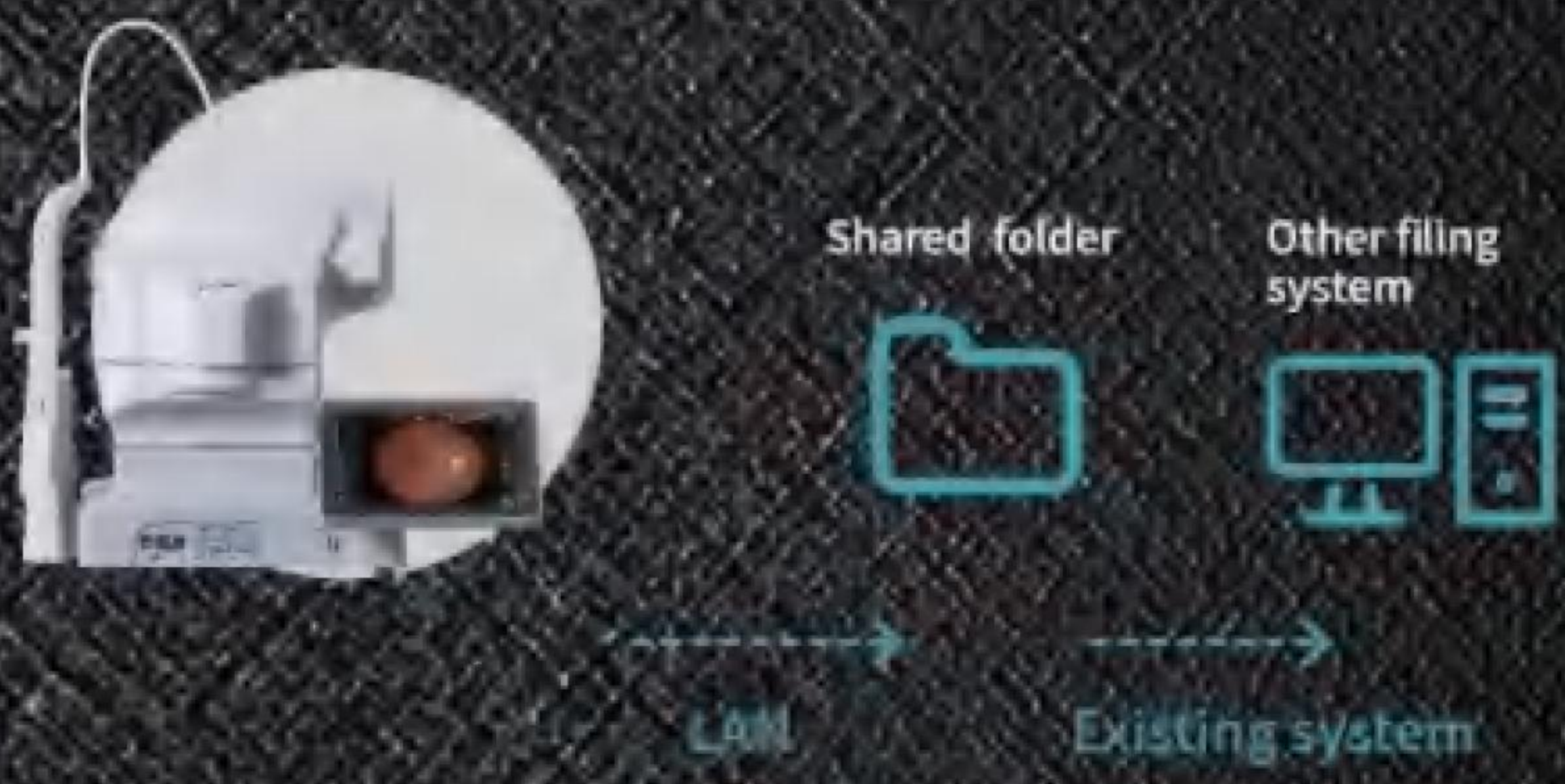
Archiving and sharing is the base...

fundus camera is equipped with an USB and LAN interface allowing flexible connections to different storage or sharing platforms.

DICOM 3.0 LAN

LAN Shared folder

can save images into a shared folder on a network. By using a shared folder, third party's can retrieve images and save them into their own system.



Direct storage

Direct storage is the simplest way of data archiving and sharing of cases when a LAN is not used. An external PC is not required.



SPECIFICATION

Image acquisition system

Acquisition modes	non-mydratic / mydratic
Field of view	50°
Working distance	35 mm
Minimum pupil size	– 3.3 mm
Focus modes	Auto / manual
Exposure modes	Auto / manual
Operation	Auto / manual
Photography	SLR camera
Image resolution	24 megapixels
Diopter compensation	± 25D
Fixation	external fixation / internal fixation
Autofocus assist light	Infrared LED
DICOM 3.0	yes
Customization AI port	yes

Others

Dimensions	380 mm (L) x 550 mm (W) x 475 mm (H)
Weight	26.5 kg
Power supply	100 - 240 V 50/60 Hz