

	NCT-5000A	NCT-5000B
Measurement mode:	Fully automatic/Automatic/Manual	
		Support
Corneal thickness measurement:	Not support	Measurement range-CCT:400-800um
		Measurement increment-CCT: 10um
		Light Source:Blue LED
Display:	1 internal fixation light (green LED), 2 external fixation lights	
Measurement accuracy:	1mmHg ( 0.133Kpa)	
Measurement range:	0-60mmHg (0-8Kpa)	
	Include automatic switching between 30/60mmHg	
Printer:	Built-in thermal printer, automatic paper cutting	
Data output/input:	Input: USB; Output:LAN/RS232C	
Size and weight:	Size and weight	

FULLY AUTOMATIC  
NON-CONTACT TONOMETER

QUICK SPEED  
3D AUTO-TRACKING  
AUTO MEASUREMENT  
SOFT AIR PUFF, SAFTY,  
PACHYMETER+TONONMETER



Non-contact tonometer  
NCT-5000A/B



Electric chin rest



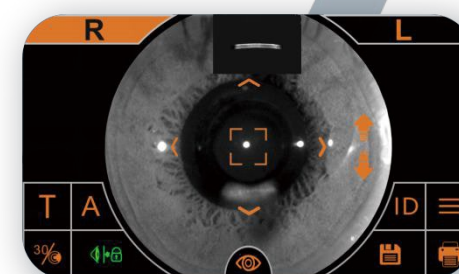
SK-5000B supports corneal thickness measurement  
More functions



Auto alignment  
Auto focus



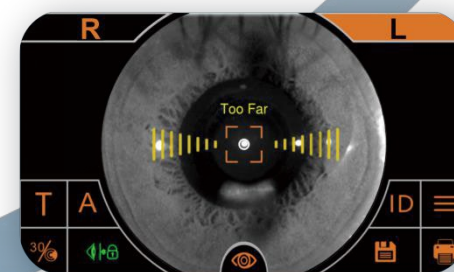
Fully automatic mode  
One touch  
You can get OS&OD data  
It also supports semi-automatic/manual mode



Corneal thickness measurement  
Auto soft air puff



Support air puff detection after turn on  
Support safety limit setting  
Safer equipment use and operation



Auto switch OS&OD



Print report  
Auto paper cutting



7 inch color capacitive touch screen  
Can be flip up and down 180 °  
Flip right and left 60°  
Operation and observation are more convenient



ONE CLICK

FULLY  
AUTOMATIC