

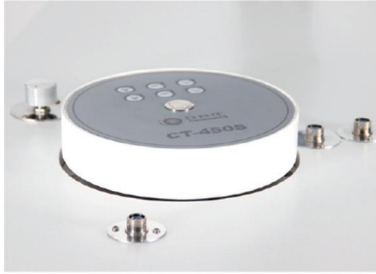


CT-450S

Chair and Stand Unit

New Technologies And Powerful Functions

Simple operation interface provides
with accurate operation experience.



Electromagnetic lock non-contact potentiometer universal power supply system
Stainless steel switch controlling electromagnetic lock can position the table freely,easily and stable.

Non-contact potentiometer imported from Japan together with knob imported with original packaging makes the adjustment more comfortable.

Universal power supply system can offer required voltage by slit lamp and keratometer installed on the table.



Wireless limit switch

Our wireless limit switch system is the first domestic research and development which will protect user's leg, the reach result by Suzhou University makes another impossibility to be indispensable



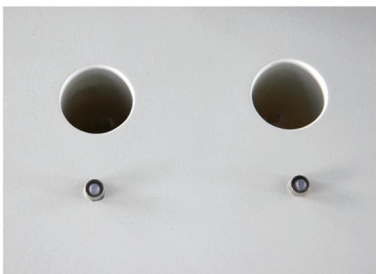
220V universal safety plug

The plug adding security block slice can adapt all the plug standard of all the countries,which makes it more relieved and practical.



Hand-operated phoropter arm

Improved hand-operated phoropter arm is more flexible,the hand feeling of locking and positioning is better.



Socket for rechargeable retinoscope and ophthalmoscope

Only insert retinoscope and ophthalmoscope easily will makes it charging easily.

Features

- ◆ Luxurious design and graceful structure, The Y shape table is designed for saving space , it can hold three instruments
- ◆ Hand-operated phoropter arm can swing up and down, left and right.
- ◆ Reclining Chair can smoothly lift up and down, forward and backward with low noise.

Specification

Unit size: 1100×800×2100mm

Table Size: 890×405mm

Table rotation range: 90°

Table movable range: 335mm

Swing arm oscillation angle: +35°

Chair rotation range: 60°

Chair up and down range: 510–600mm

Chair loading ability: 200–250kg

Chair backrest obliquity: 160°

Lamp: Halogen (24V, 3W)

Electric Voltage: AC220V/110V 50/60HZ

Weight: 200kg